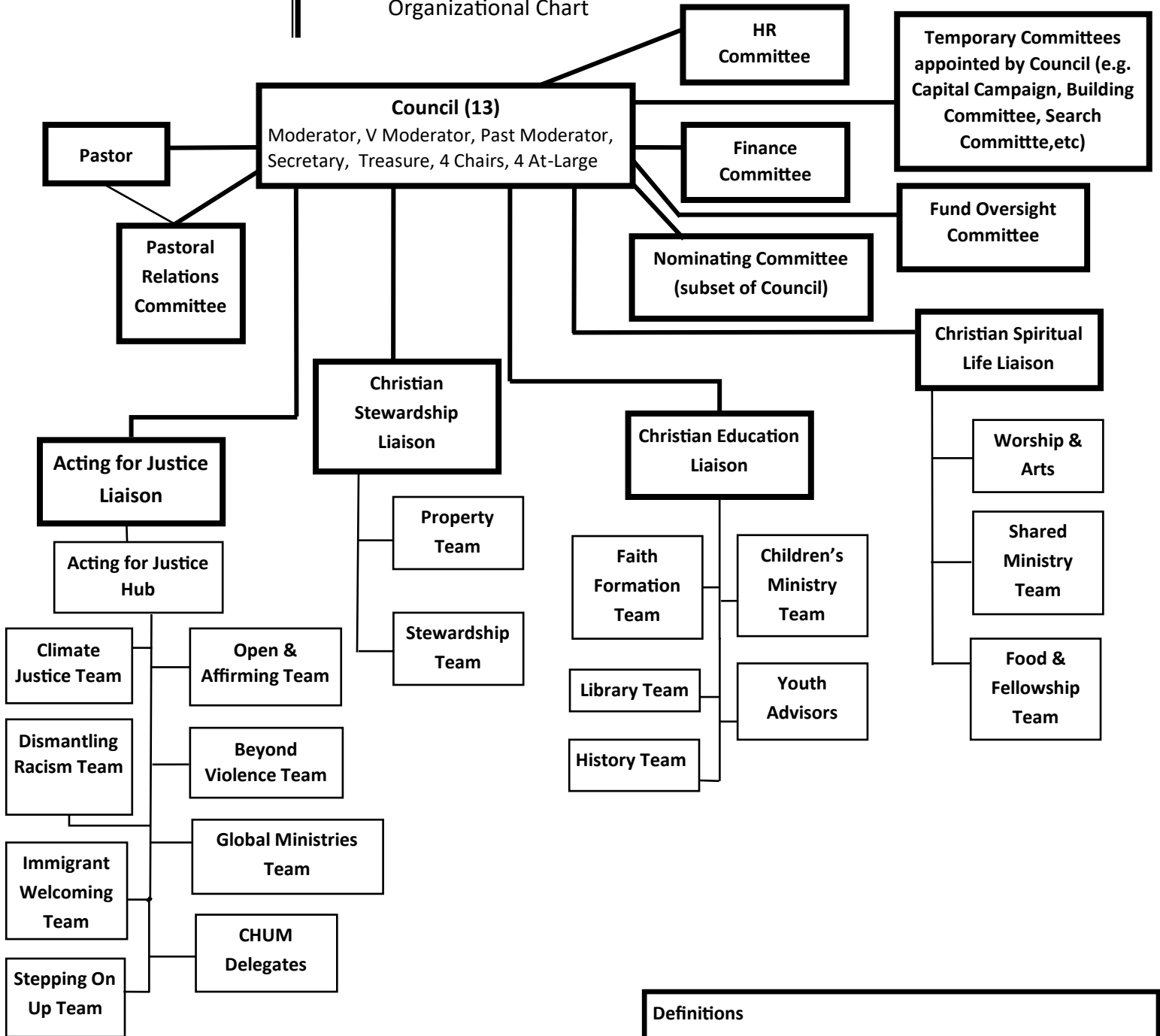


Peace United Church of Christ

Organizational Chart



Definitions

Liaison Councilors= Responsible for facilitating areas of ministry and reporting activities, budgets, etc. to the Council.

Committees= Elected or appointed groups serving the basic function of the church.

Teams= Congregationally driven activity/ advocacy groups formed on the basis of interest and member commitment.

Staff= Employees who function as advisors and support to various teams and committees; under supervision of the Pastor